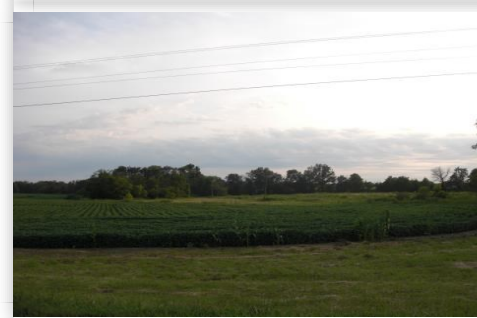
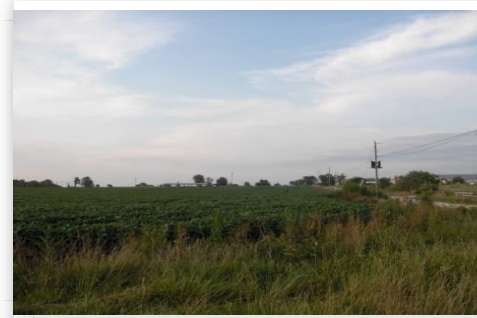


**\$375,000**

Commercial / Residential Land w/ Hwy Frontage  
For Sale in MO  
MLS # 24119-14018



**MLS# :** 24119-14018

**Price :** \$375,000

**Type :** Commercial Property

**Size :** 37.5 Acres

**Beds:** 0

**Baths :** 0.00

**Address :** Brush Creek Road , New London , Missouri , 63459

## FEATURES

- ✓ tillable land for sale in mo
- ✓ residential land for sale mo
- ✓ highway front acreage for sale
- ✓ commercial land for sale in mo
- ✓ land for sale new london mo
- ✓ northeast missouri real estate
- ✓ farm for sale in new london
- ✓ new london mo real estate

## ABOUT THE PROPERTY

# Commercial / Residential Acreage with Highway 61 Frontage For Sale in New London, Missouri.

Tillable acreage & utilities located just outside of New, London, Missouri. Property includes 37.5 acres, and has water and electric on the property. Located at the Hwy 61 and Hwy 19 interchange. 2015 MODOt average daily traffic counts were at 11,516 for the interchange. The property has approximately 1,100 feet of highway 61 frontage and would be an excellent site for a commercial operation with great highway visibility!

For more information and to schedule showings, contact broker Jose' Cruz at 314-803-1104.

## CONTACT US

**JOSE CRUZ**

BROKER / OWNER

📞 (314) 803-1104

✉ josecruz@uclandandlake.com

🏠 Land And Lake Properties

📍 70 Northshore Drive, Po Box 2369, Lake Ozark, Missouri, United States, 65049